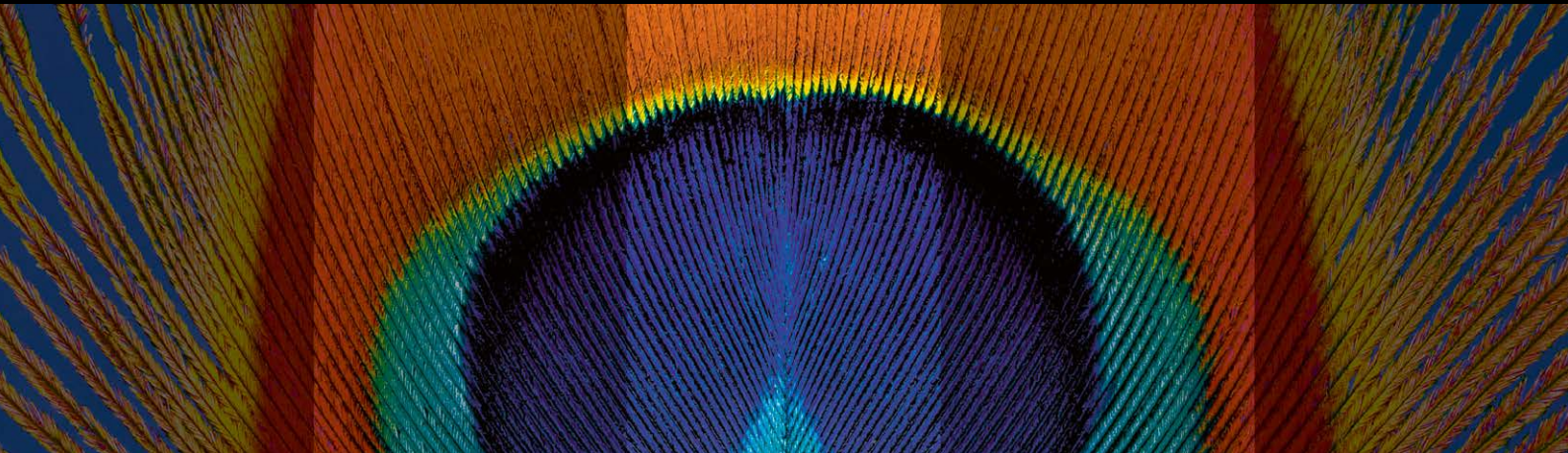


The DNA for
Diagnostic Confidence



SPECTRALIS®

**HEIDELBERG
ENGINEERING**

Your journey starts with the DNA

No matter how you configure your SPECTRALIS, you can be sure it contains the core DNA for high contrast, high resolution images that cut through the noise and give you the confidence to pinpoint pathology, identify real change and make more informed clinical decisions.

Table of Contents

- Upgradeable Platform
- Confocal Fundus Image
- Multi-modality Diagnostics
- TruTrack Active Eye Tracking
- Retinal Recognition
- Noise Reduction
- 10 Layer Visualization

●—● Upgradeable Platform

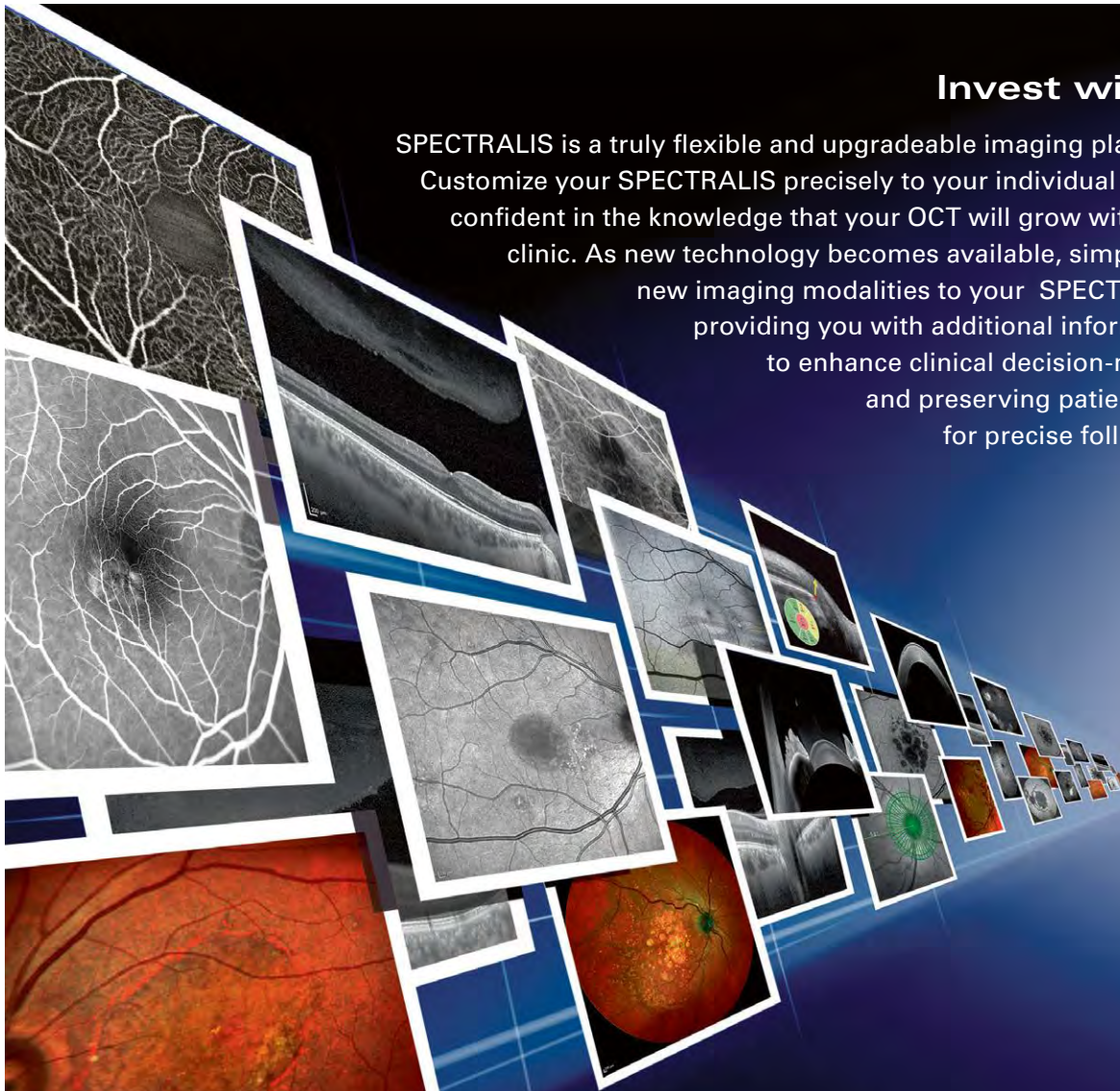


My team was one of the first users of Heidelberg Engineering imaging devices in the world; in fact, our SPECTRALIS platform was the eighth to be produced. We have had several upgrades and continue to be delighted, particularly with the OCT Angiography Module. In the past ten years the value of the SPECTRALIS has come to be recognized throughout the world for images that are superior, fast, powerful and reliable – it is indispensable.

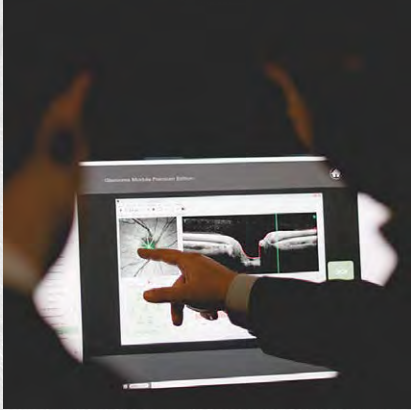
Professor Murat Karacorlu, Istanbul Retina Institute, Turkey

Invest wisely

SPECTRALIS is a truly flexible and upgradeable imaging platform. Customize your SPECTRALIS precisely to your individual needs, confident in the knowledge that your OCT will grow with your clinic. As new technology becomes available, simply add new imaging modalities to your SPECTRALIS, providing you with additional information to enhance clinical decision-making and preserving patient data for precise follow-up.



●—● Confocal Fundus Image



Improve the patient experience

Confocal scanning laser ophthalmoscopy (cSLO) provides high contrast, high quality images, even in challenging patients. With infrared, no pupil dilation is necessary. The confocal system provides images even in eyes with media opacities. Live fundus assessment with simultaneously-captured OCT enables you to pinpoint and capture pathology in real time, providing complementary diagnostic information.



The SPECTRALIS is of great value – it is swift, easy to use, and ergonomically easy for patients, and you don't need to dilate the pupil, which is a great advantage.

Professor Usha Chakravarthy, Queen's University, Belfast, Ireland



The confocal scanning laser system, together with the eye tracker, provide high resolution images that are of great value for both our research purposes and the clinic's day to day care of patients.

Professor Frank Holz, University of Bonn, Germany

●—● Multi-modality Diagnostics



By co-locating and comparing the en face images of CSLO-FA and CSLO-ICGA with the cross-sectional images of SD-OCT, we are able to interpret the images better than with any single modality alone. The SPECTRALIS multi-modal imaging platform is, in my opinion, indispensable in my retina clinic.

Adj. Professor Tock-Han Lim, Senior Consultant and Past Director, NHG Eye Institute / Adj. Professor, Lee Kong Chian School of Medicine, Singapore



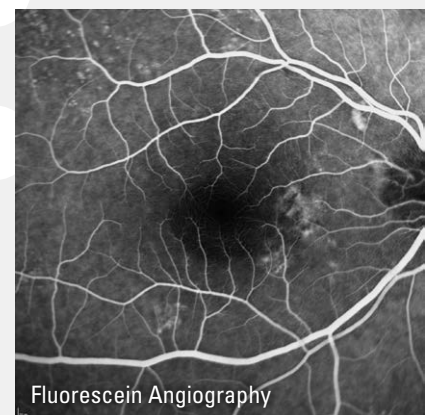
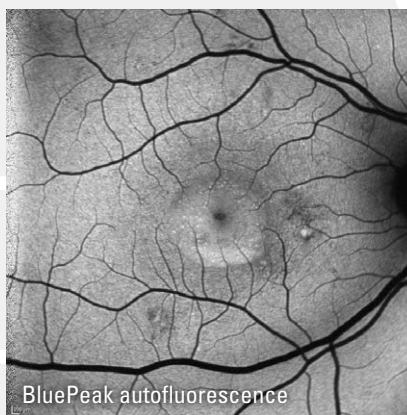
Amongst the benefits of the imaging being provided on one platform is that we don't need to reposition patients in the clinic for imaging on different devices. This is a great benefit in a busy department.

Professor Frank Holz, University of Bonn, Germany



Refine clinical decision making

The unique combination of imaging modalities provides the additional information you need to make confident clinical decisions. Use different, established and novel imaging techniques simultaneously to improve your understanding of different pathologies.



●—● TruTrack Active Eye Tracking

Freeze time

TruTrack Active Eye Tracking is patented technology that uses a second laser beam to actively track the eye during OCT scanning to avoid motion artifact. TruTrack effectively “freezes” the retina, allowing you to capture the precise OCT image you want, even if the patient blinks or moves. Your patient is comfortable and you are confident.



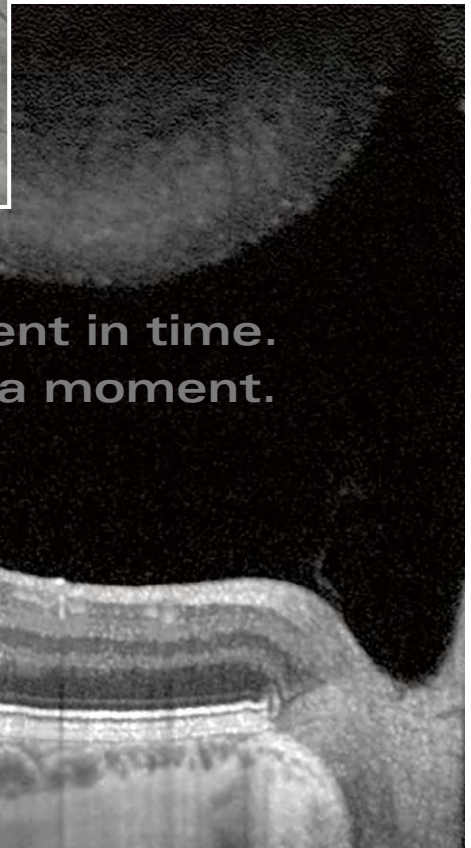
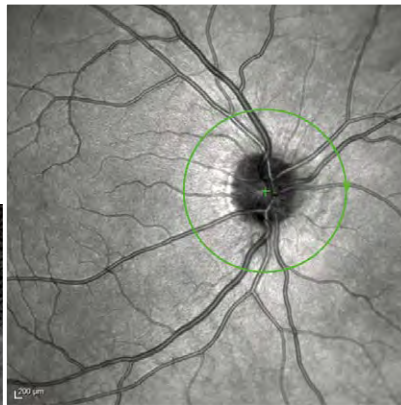
A direct benefit of the TruTrack eye tracking is that I can tell patients that it doesn't matter if they blink or move, which makes them much more relaxed about the examination.

Dr Roberto Gallego-Pinazo,
Oftalvist Clinic, Valencia, Spain



The SPECTRALIS ability to track the eye live is very valuable in providing reliable follow-up data. When I see a change I can rely on it being perfectly matched to previous images. This is particularly helpful in patients with poor cooperation.

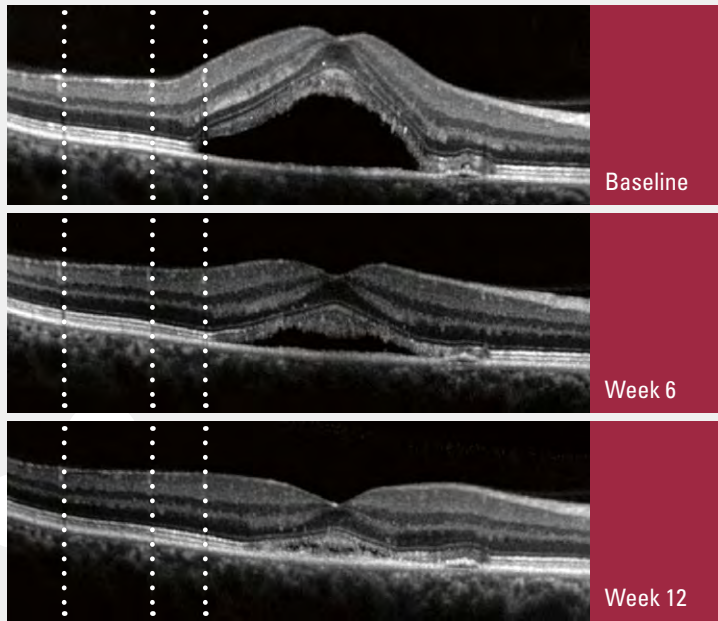
Professor Sanjay Asrani,
Duke University Eye Center,
Cary, North Carolina, USA



**Photography freezes a moment in time.
SPECTRALIS freezes time in a moment.**

Retinal Recognition

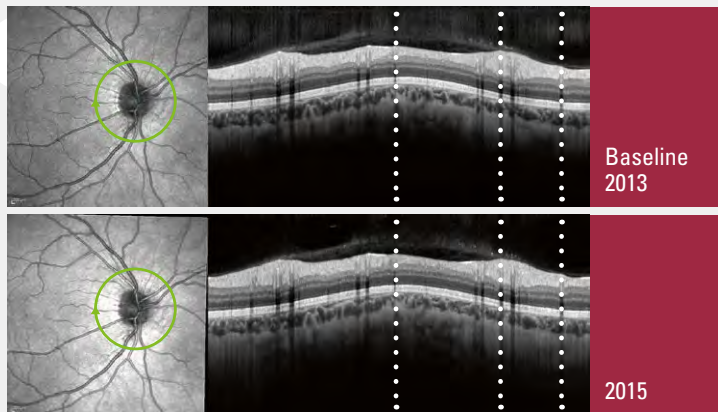
Retina



Detect real change

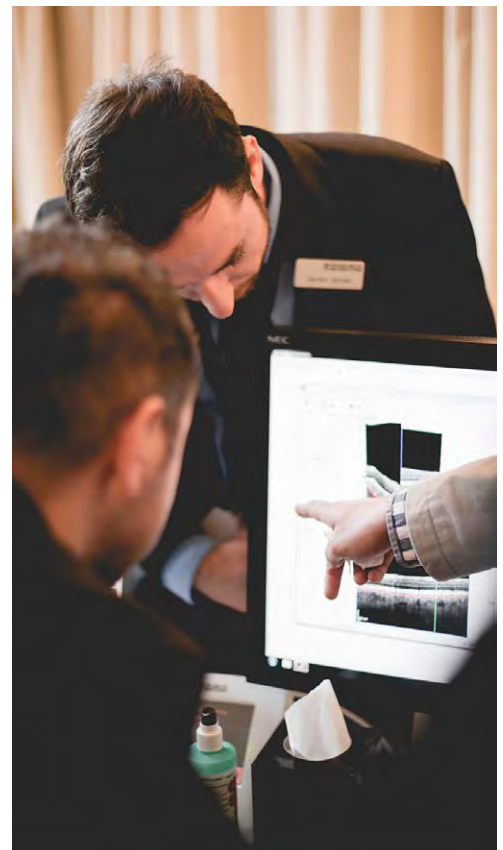
SPECTRALIS uses patented TruTrack Active Eye Tracking with retinal recognition technology to automatically reposition the OCT scan in the same anatomic location at follow-up for incredible accuracy. Cleverly, SPECTRALIS will never let you follow-up on the wrong patient or the wrong eye. Detect changes as small as 1 micron and confidently monitor disease progression over time.

Glaucoma

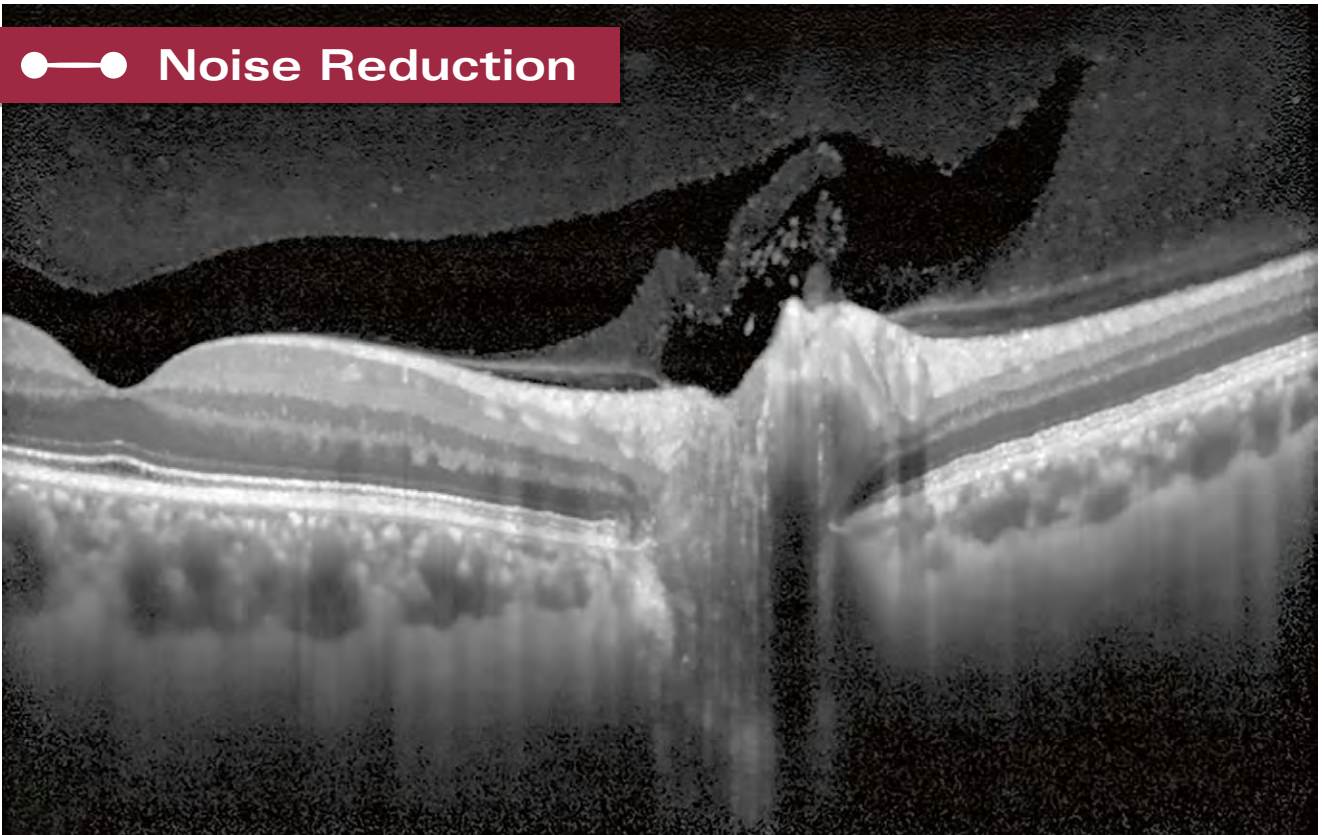


TruTrack eye tracking is an absolutely essential feature for high image quality and accurate follow-up of OCT measurements. Without this feature we would be less confident about our diagnosis. Nothing compares with the excellent image quality of the SPECTRALIS.

Professor Christian Mardin,
Friedrich-Alexander University,
Erlangen-Nuremberg, Germany



●—● Noise Reduction



Pinpoint pathology

Thanks to TruTrack Active Eye Tracking, SPECTRALIS averages up to 100 B-scans live in front of your eyes even in a volume scan. This provides you with high resolution images from vitreous through to choroid that enable you to pinpoint pathology.



The crisp and high resolution images are valuable for both our clinical routine as well as research into retinal and macular diseases.

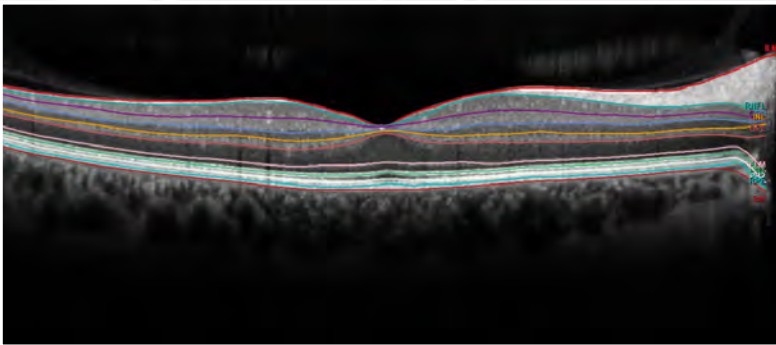
Professor Frank Holz,
University of Bonn, Germany

10 Layer Visualization



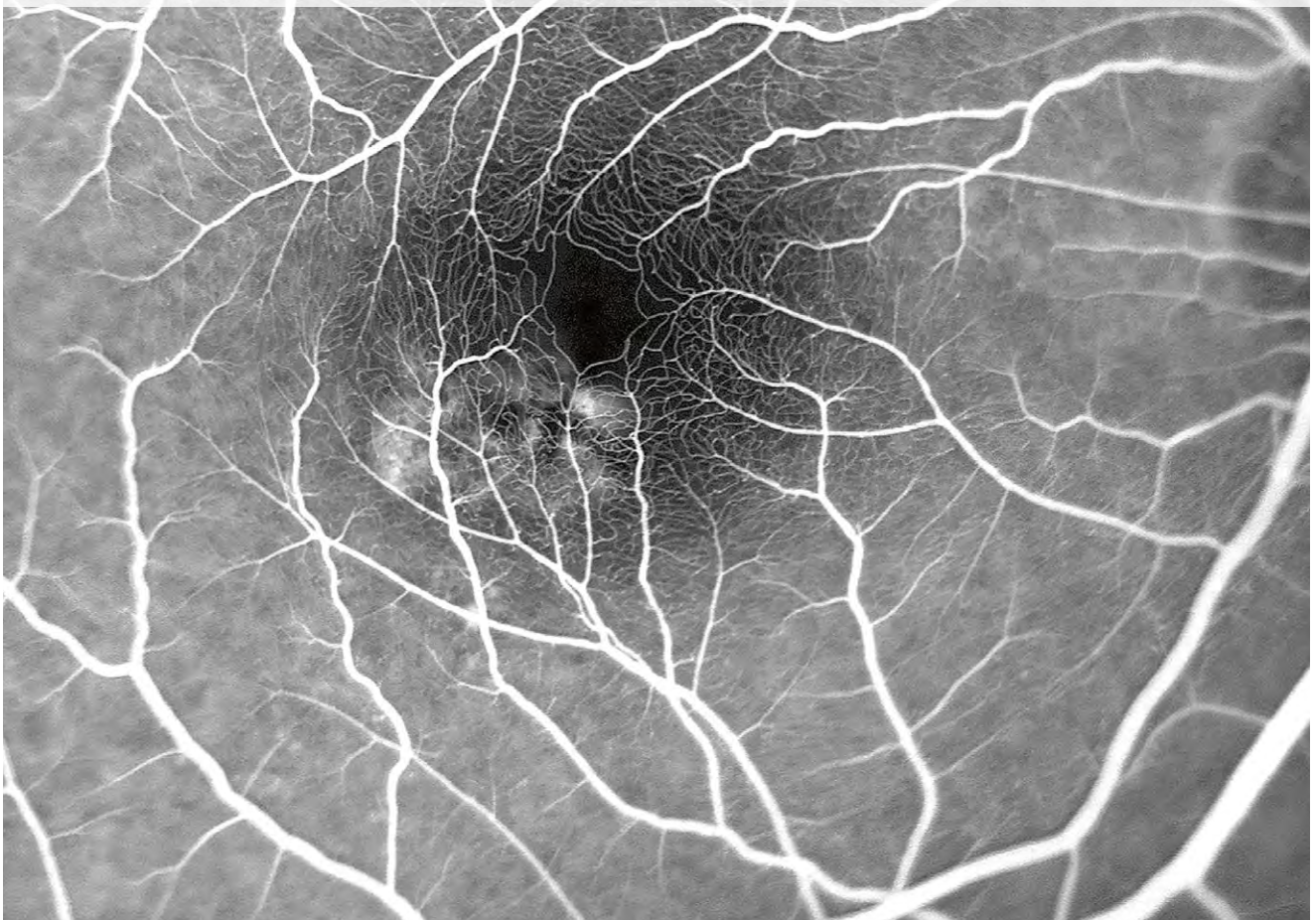
I am completely in love with my SPECTRALIS in so many ways. Heidelberg Engineering technology gives an extra level of confidence because of the degree of information. The structural OCT is terrific – no one can beat the resolution and user-friendly nature of the SPECTRALIS.

Dr Roberto Gallego-Pinazo, Oftalvist Clinic, Valencia, Spain



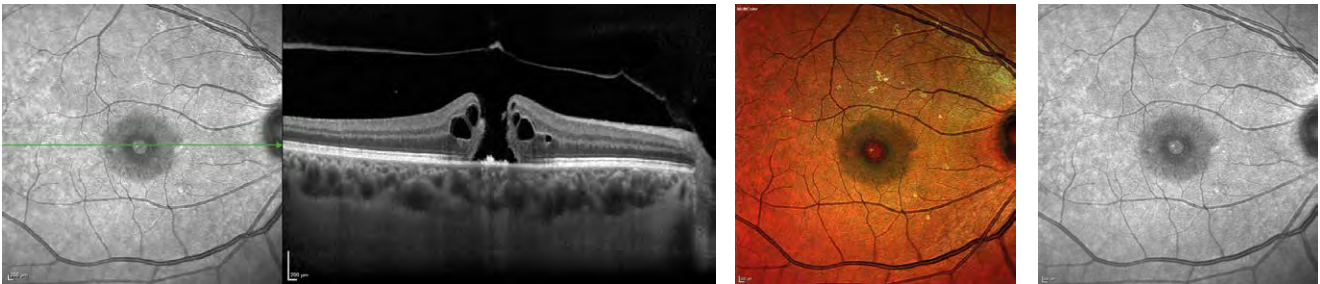
Don't miss a thing

SPECTRALIS provides you with high resolution OCT images for visualization of 10 retinal layers, to help you confidently describe and pinpoint pathology.



●—● Build your Confidence

The true potential of multi-modal diagnostic imaging awaits you



I have used a few different OCT machines and I feel the SPECTRALIS offers the best results. In my opinion as a photographer it is very versatile and in the right hands it can capture high quality images of almost all patients. The SPECTRALIS would always be my OCT of choice.

Mark Hope, The Princess Alexandra Eye Pavillion, Edinburgh, UK

Discover the power and flexibility of multi-modality imaging with SPECTRALIS.

Hybrid angiography*

Acquire fluorescein and ICG angiography images simultaneously and in combination with OCT imaging. Use video capture to view dynamic FA and ICGA vessel filling, flow, and leakage. Combine with the OCT Angiography Module for the flexibility to customize the slab position for visualisation of pathology in any retinal layer.

*Optional extras

Build your Confidence



Ophthalmic Imaging Association award winner for best OCT of 2016
taken by Mark Hope, The Princess Alexandra Eye Pavilion, Edinburgh, UK

Complete scanning flexibility

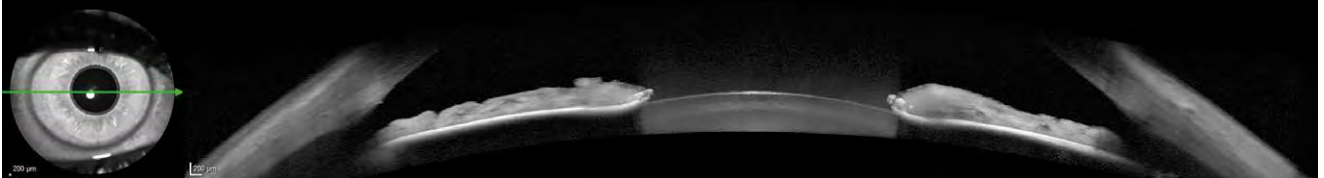
Quickly obtain diagnostic images with LIVE high-resolution image capture, which provides enough control to image challenging patients without the hassle and workflow disruption of a redo button.

The unique combination of cSLO laser imaging and OCT allows you to adjust every aspect of the scan. Choose the type, density, position, size, and axis to help you pinpoint pathology and acquire more detailed information to refine your clinical decisions. Create and save preset scanning protocols customized to patient demographics.

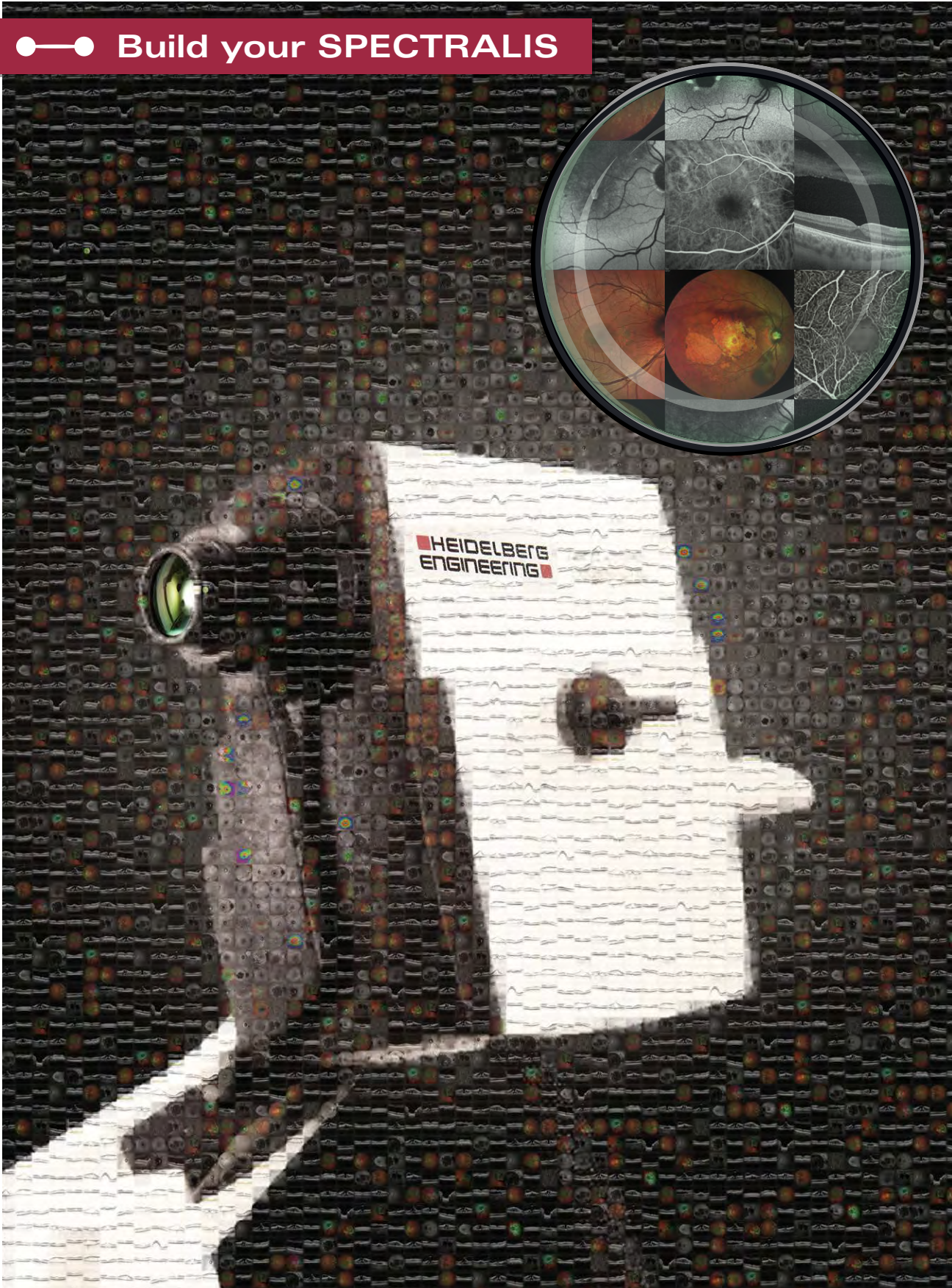
Versatile imaging capability

Go beyond the basics by using enhanced and full depth imaging functionality for more detail in the vitreous and choroid. The transverse section analysis also gives you an enface view of the retinal structure. The Anterior Segment Module* can help you assess the anterior chamber angle, relevant for the diagnosis of narrow angle glaucoma. With 9 internal fixation targets and an external fixation light, you can create widefield fundus montages that provide insight into the periphery.

*Optional extras



●—● Build your SPECTRALIS



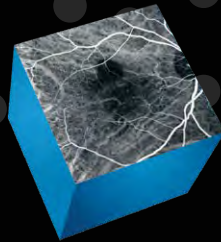
Build your SPECTRALIS

It's easy to add additional functionality to your SPECTRALIS that enhances clinical decision making.

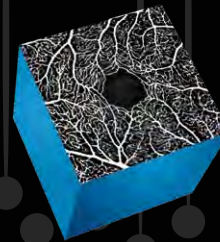


Fluorescein Angiography Module

High resolution images and video sequences showing the dynamic movement of dye through the vessels and minute details of the perifoveal capillary network.

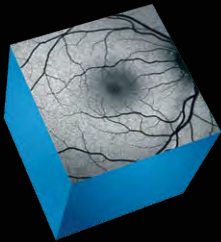


ICG Angiography Module



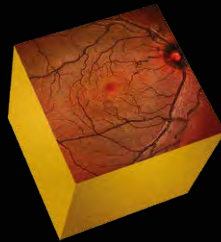
OCT Angiography Module

Non-invasive imaging that provides a three-dimensional depiction of retinal vascular flow with versatility in field of view, scan speed, and image resolution.



BluePeak Module

Provides a map of the retina which can reveal metabolic malfunction of diagnostic significance in many conditions.



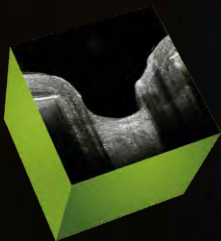
MultiColor Module

Uses three laser wavelengths simultaneously for structural detail and clarity not available through traditional fundus photography.



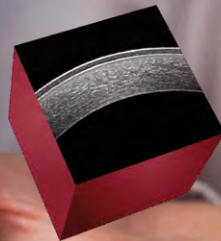
Widefield & Ultra-Widefield Imaging Modules

Facilitates detection of peripheral pathology. View up to 102° field of view in a single shot.



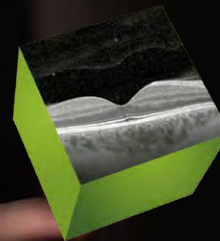
Glaucoma Module Premium Edition

Comprehensive analysis of the ONH, RNFL and GCL customized to the patients individual anatomy.



Anterior Segment Module

High resolution images on the cornea, sclera and anterior chamber angles.



OCT2 Module

Offers enhanced image quality from vitreous to choroid. A faster scanning speed of 85,000 Hz improves clinical workflow by shortening examination times.



Headquarters

Heidelberg Engineering GmbH · Max-Jarecki-Str. 8 · 69115 Heidelberg · Germany
Tel. +49 6221 64630 · Fax +49 6221 646362

AUS

Heidelberg Engineering Pty Ltd · 404 Albert St. · East Melbourne 3002 · Victoria
Tel. +61 396 392 125 · Fax +61 396 392 127

CH

Heidelberg Engineering GmbH · Schulstrasse 161 · 8105 Regensdorf
Tel. +41 44 8887 020 · Fax +41 44 8887 024

UK

Heidelberg Engineering Ltd. · 55 Marlowes · Hemel Hempstead · Hertfordshire HP1 1LE
Tel. +44 1442 502 330 · Fax +44 1442 242 386

www.HeidelbergEngineering.com · Information@HeidelbergEngineering.com